



Research on the Diagnostic Precision of Ultrasound Imaging Characteristics of Common Neonatal Pulmonary Disorders: A Cross-sectional Study

Zaili Feng^{1,*}, Na Huang¹

¹The People's Hospital of Dehong Prefecture, Kunming Medical University, Kunming, China

*Corresponding Author: The People's Hospital of Dehong Prefecture, Kunming Medical University, Kunming, China. Email: fengzaili@qq.com

Received: 5 October, 2024; Revised: 24 February, 2025; Accepted: 23 March, 2025

Abstract

Background: This cross-sectional study examines the characteristic lung ultrasound (LUS) patterns of prevalent pulmonary diseases in infants. Neonatal lung disorders pose diagnostic challenges that require accurate ultrasonographic characterization to guide management.

Objectives: The present study aimed to characterize LUS features of prevalent neonatal lung conditions and enhance LUS-based diagnosis of pulmonary diseases in newborns.

Methods: A cross-sectional study was conducted from March 2018 to January 2024, including 466 newborns. Lung ultrasound images were analyzed to describe common lung disease patterns.

Results: Normal neonatal lungs displayed lung sliding, parallel A-lines, smooth pleural lines, and a "sandpaper sign" on M-mode. The duration ranged from 48.12 hours (95% CI, 45.80 - 50.44) to 143.23 hours (95% CI, 137.27 - 149.19). B-lines were infrequently observed. Alveolar-interstitial syndrome (AIS), "white lung", pulmonary point symptoms, pleural effusion, and reduced or missing A-lines were present in transient tachypnea of the newborn (TTN). As gestational age increased, the incidence of TTN reduced. Comparing TTN to controls, the B-line duration was greater, ranging from 77.09 hours (95% CI, 73.42 - 80.76) to 221.75 hours (95% CI, 212.80 - 230.70). B-lines alone were not sufficient to diagnose TTN [48.12 hours (95% CI, 45.80 - 50.44) to 143.23 hours (95% CI, 137.27 - 149.19), $P < 0.05$]. Neonates with neonatal respiratory distress syndrome (NRDS), neonatal acute respiratory distress syndrome (ARDS), meconium aspiration syndrome (MAS), pneumonia (PN), neonatal pulmonary hemorrhage (NPH), and bronchopulmonary dysplasia (BPD) showed lung consolidation, ground-glass opacities, "snowflake sign", lung pulsation, persistent "sandpaper sign" and possible pleural effusions or AIS. Lung consolidation (liver-like appearance) was prevalent. Consolidation of atelectasis was observed without pulmonary point signs or pleural effusions. A layering sign, possible pulmonary point signals, and absent or uneven lung sliding were signs of pneumothorax.

Conclusions: The results of our study indicate that common lung conditions in newborns show unique ultrasonographic features. Multiple imaging features may be present in a single disease, and a single imaging feature may be seen in several different diseases. Lung ultrasound findings require clinical correlation.

Keywords: Neonates, Lung Conditions, Ultrasonography, Imaging Properties, Lung Ultrasound

1. Background

Common pulmonary diseases in neonates include bronchopulmonary dysplasia (BPD), pneumothorax, atelectasis, pneumonia of the newborn (PN), neonatal pulmonary hemorrhage (NPH), acute respiratory distress syndrome (ARDS), neonatal respiratory distress

syndrome (NRDS), meconium aspiration syndrome (MAS), and transient tachypnea of the newborn (TTN). Clinical history, physical examination, arterial blood gas measurement, chest radiography, and computed tomography (CT) scans are all important components of traditional diagnostic methods. However, neonates who undergo recurrent CT and chest radiography exams are

at risk of radiation exposure and face inconvenience (1). Due to its portability, real-time imaging capabilities, high repeatability, affordability, and lack of ionizing radiation, lung ultrasound (LUS) has become a valuable diagnostic and monitoring tool (2-4). Lung ultrasound is increasingly used as it has demonstrated potential in managing several lung conditions (2, 3). Although extensive research has investigated LUS findings in specific infant lung illnesses, a comprehensive comparison of ultrasonographic features across these prevalent conditions is lacking (5-9).

2. Objectives

The present study aimed to describe and contrast the ultrasonographic characteristics of these common infant lung disorders to improve diagnostic precision.

3. Methods

3.1. Study Population

From March 2018 to January 2024, a cross-sectional study was conducted at the obstetrics and neonatal departments of Dehong People's Hospital, affiliated with Kunming Medical University. The ethics committee of the hospital approved the study protocol (2018DY008), and informed consent was obtained from each participant's guardian.

3.2. Inclusion and Exclusion Criteria

Inclusion criteria were as follows: (1) Children diagnosed by clinical combined chest X-ray and LUS diagnosis, with consistent results from both methods; (2) age ≤ 1 day, with LUS and chest radiography performed within 15 minutes of each other; (3) no fetal malformations or developmental abnormalities; (4) no medical disputes between the hospital and the guardians; and (5) parental consent to participate. Neonates with skin disorders, skin lesions, or other conditions preventing an LUS examination were excluded, as were those with suspected or confirmed HIV or syphilis infection. Standardization of data collection methods was ensured to reduce observer bias.

3.3. Research Design and Information Gathering

Between March 2019 and January 2024, 466 neonates who met the inclusion criteria were enrolled in this descriptive study. As controls, 97 healthy newborns from

the obstetrics and neonatal departments were included. A thorough characterization of the ultrasonographic findings of prevalent newborn lung disorders was conducted. Ultrasonographic parameters, such as the frequency and duration of B-lines in the TTN group stratified by gestational age, were compared between the TTN group and controls.

3.4. Lung Ultrasound Examination

A Mindray M5T portable ultrasound system (Mindray Bio-Medical Electronics Co., Ltd., Shenzhen, China) with a high-frequency linear array probe (≥ 9 MHz) was used to perform LUS exams (2-4). One focus point was placed at the pleura-lung interface, and the scanning depth was adjusted to 4 - 6 cm. Spatial compounding was turned off. Board-certified neonatologists conducted and interpreted every evaluation. Sequential longitudinal and transverse scans of each lung region (bilaterally) were used as part of a systematic strategy. Throughout the scanning process, the probe was kept perpendicular to the ribs or pleura. Typically, the lungs are divided into three regions: Anterior, lateral, and posterior, with the anterior axillary line and posterior axillary line as the boundaries. Therefore, the lungs on both sides are divided into six regions for continuous scanning. When the weight of the examinee is ≥ 3 kg, each lung is divided into upper and lower lung fields with the line connecting the two nipples as the boundary, dividing both lungs into 12 areas for continuous scanning. [Tables 1-4](#) present the results of the LUS.

3.5. Ultrasound Parameters Seen

The interface between the visceral pleura and the lung parenchyma is represented by the pleural line, a hyperechoic line resulting from the tissues' different acoustic impedances. In healthy lungs, the pleural line is continuous, crisp, and smooth. When the probe is positioned perpendicular to the ribs, the horizontal movement of the visceral pleura relative to the parietal pleura during respiration is known as lung sliding, visible as a dynamic gliding motion on real-time ultrasound.

- A-lines: When the ultrasonic beam is perpendicular to the pleural surface, reverberation artifacts cause these evenly spaced, horizontal hyperechoic lines to appear parallel to and directly below the pleural line. Their intensity progressively diminishes with increasing depth.

Table 1. Ultrasonographic Findings in Neonatal Lung Diseases ^a

Ultrasonographic Finding	TTN (n = 88)	NRDS (n = 69)	ARDS (n = 29)	MAS (n = 57)	PN (n = 89)	NPH (n = 6)	BPD (n = 20)	Atelectasis (n = 3)	Pneumothorax (n = 8)	Control (n = 97)
B-lines	71 (80.7)	56 (81.2)	24 (82.8)	49 (86.0)	77 (86.5)	6 (100)	12 (60.0)	2 (66.7)	0 (0)	89 (91.8)
AIS/dense B-lines/white lung	83 (94.3)	11 (15.9)	4 (13.8)	11 (19.3)	19 (21.3)	3 (50)	2 (10.0)	1 (33.3)	0 (0)	0 (0)
Pulmonary point signs	0 (0)	0 (0)	0 (0)	0 (0)	0 (0)	0 (0)	0 (0)	0 (0)	6 (75)	0 (0)
Double lung points	72 (81.8)	31 (44.9)	13 (44.8)	30 (52.6)	48 (53.9)	2 (33.3)	3 (15.0)	0 (0)	0 (0)	0 (0)
Abnormal pleural line	88 (100)	69 (100)	29 (100)	57 (100)	89 (100)	6 (100)	12 (60.0)	1 (33.3)	0 (0)	0 (0)
A-line disappearance/reduction	88 (100)	69 (100)	29 (100)	57 (100)	89 (100)	6 (100)	12 (60.0)	1 (33.3)	0 (0)	0 (0)
Lung consolidation/etc.	0 (0)	69 (100)	29 (100)	57 (100)	89 (100)	6 (100)	20 (100)	1 (33.3)	0 (0)	0 (0)
Abnormal lung slip	0 (0)	0 (0)	0 (0)	0 (0)	0 (0)	0 (0)	0 (0)	0 (0)	8 (100)	0 (0)
Stratospheric sign	0 (0)	0 (0)	0 (0)	0 (0)	0 (0)	0 (0)	0 (0)	0 (0)	8 (100)	0 (0)
Beach sign	88 (100)	69 (100)	29 (100)	57 (100)	89 (100)	6 (100)	20 (100)	3 (100)	0 (0)	97 (100)
Pleural effusion	17 (19.3)	13 (18.8)	3 (10.3)	9 (15.8)	19 (21.3)	5 (83.3)	2 (10.0)	0 (0)	0 (0)	0 (0)
Spared areas	28 (31.8)	0 (0)	0 (0)	0 (0)	0 (0)	0 (0)	0 (0)	0 (0)	0 (0)	0 (0)

Abbreviations: TTN, transient tachypnea of newborn; NRDS, neonatal respiratory distress syndrome; ARDS, acute respiratory distress syndrome; MAS, meconium aspiration syndrome; PN, pneumonia of newborn; NPH, neonatal pulmonary hemorrhage; BPD, bronchopulmonary dysplasia; AIS, alveolar-interstitial syndrome.

^a Values are expressed as No (%).

Table 2. Comparison of Ultrasonographic Findings Between Neonates with Transient Tachypnea of Newborn and Controls ^a

Ultrasonographic Finding	TTN (n = 88)	Controls (n = 97)	χ^2 or Fisher's Exact Test	P-Value
White lung	29 (32.95)	0 (0.00)	37.91	< 0.01
Dense B-lines	62 (70.45)	0 (0.00)	102.79	< 0.01
AIS	83 (94.32)	0 (0.00)	165.94	< 0.01
B-lines artifacts	71 (80.68)	97 (100.00)	20.63	< 0.01
Double lung points	72 (81.82)	0 (0.00)	129.93	< 0.01
Pleural effusion	17 (19.32)	1 (1.03)	17.57	< 0.01
Lung consolidation	0 (0.00)	0 (0.00)	-	-
Abnormal pleural line/A-lines	88 (100.00)	0 (0.00)	185.00	< 0.01

Abbreviations: TTN, transient tachypnea of newborn; AIS, alveolar-interstitial syndrome.

^a Values are expressed as No. (%).

Table 3. Frequency of B-lines in Neonates with Transient Tachypnea of Newborn Stratified by Gestational Age ^a

Gestational Age (wk)	TTN (n = 88)	Controls (n = 97)	χ^2 or Fisher's Exact Test	P-Value
≤ 32	28 (31.82)	8 (8.25)	16.36	< 0.01
≤ 34	40 (45.45)	19 (19.59)	4.98	< 0.05
≤ 37	14 (15.91)	28 (28.86)	4.41	< 0.05
≤ 42	6 (6.82)	38 (39.18)	26.65	< 0.01
≥ 42	0 (0.00)	4 (4.12)	2.02	> 0.05

Abbreviations: LUS, lung ultrasound; TTN, transient tachypnea of newborn.

^a Values are expressed as No. (%).

- B-lines: These are hyperechoic, vertically oriented lines that run from the pleural line to the base of the

lung. During breathing, they move in tandem with the pleural line sliding.

Table 4. Duration of B-lines (Hours, Mean \pm SD) in Neonates with Transient Tachypnea of Newborn Stratified by Gestational Age

Gestational Age (wk)	TTN (n = 88)	Controls (n = 97)	t-Test or Mann-Whitney U	P-Value
≤ 32	221.75 \pm 42.81	143.23 \pm 29.97	14.557	0.000
≤ 34	177.66 \pm 32.17	103.27 \pm 23.74	18.005	0.000
≤ 37	110.45 \pm 22.69	84.00 \pm 19.77	8.471	0.000
≤ 42	77.09 \pm 17.55	48.12 \pm 11.67	13.332	0.000
≥ 42	67.28 \pm 15.41	38.48 \pm 9.21	-39.184	0.000

Abbreviation: TTN, transient tachypnea of the newborn.

Table 5. Characteristics of Neonates by Diagnostic Group^a

Characteristics	TTN (n = 88)	NRDS (n = 69)	ARDS (n = 29)	MAS (n = 57)	PN (n = 89)	NPH (n = 6)	BPD (n = 20)	Atelectasis (n = 3)	Pneumothorax (n = 8)	Control (n = 97)
Gender (male/female)	49/39	36/33	16/13	30/27	47/42	4/2	10/10	1/2	3/5	51/46
Gestational age (wk)	31.68 \pm 2.03	30.75 \pm 2.34	33.55 \pm 3.21	39.51 \pm 3.36	36.86 \pm 2.96	32.11 \pm 1.53	31.15 \pm 1.81	38.37 \pm 3.52	33.14 \pm 3.17	38.36 \pm 3.12
Age at ultrasound diagnosis (h)	19.75 \pm 3.20	3.37 \pm 1.05	25.44 \pm 3.33	19.47 \pm 8.93	123.79 \pm 24.56	70.88 \pm 21.15	696.12 \pm 88.21	68.36 \pm 13.56	51.91 \pm 12.81	28.31 \pm 7.34
Birth weight (kg)	1.98 \pm 0.54	1.69 \pm 0.53	2.83 \pm 0.36	3.89 \pm 0.77	3.15 \pm 0.44	2.74 \pm 0.36	1.79 \pm 0.52	3.10 \pm 0.75	2.13 \pm 0.46	3.15 \pm 0.62
Preterm/term	82/6	67/2	21/8	0/57	60/27	4/2	20/0	1/2	6/2	55/42
Vaginal/cesarean	32/56	31/38	15/14	32/25	42/47	2/4	7/13	1/2	5/3	45/52

Abbreviations: TTN, transient tachypnea of the newborn; NRDS, neonatal respiratory distress syndrome; ARDS, acute respiratory distress syndrome; MAS, meconium aspiration syndrome; PN, pneumonia of newborn; NPH, neonatal pulmonary hemorrhage; BPD, bronchopulmonary dysplasia; SD, standard deviation.

^a Values are expressed as No. or mean \pm SD.

- **Confluent B-lines:** These are B-lines so closely packed together in an intercostal area that they are indistinguishable from one another, with the rib shadow still discernible. Confluent B-lines in at least two successive intercostal gaps within a single scan region indicate AIS.

- **Dense B-lines:** B-lines are referred to as dense B-lines when they are so numerous that the rib shadow is nearly hidden. The appearance of the lung when dense B-lines are seen in both scan regions is referred to as "white lung".

- **Spared areas:** Typically aerated lung parenchyma areas at least one intercostal space in size, encircled by consolidated lung tissue, with discernible pleural line and A-lines within the lung island.

- **Lung consolidation:** The appearance of lung tissue on ultrasonography that mimics the liver's echogenicity, or "hepatization".

- **Lung pulsation:** Real-time ultrasound shows a discernible pulsation of consolidated lung tissue in rhythm with the cardiac cycle, especially when the

consolidation is considerable and near the cardiac boundary.

- **Fragmentation sign:** The blurred line separating consolidated and aerated lung tissue, manifesting as an uneven or broken echotexture.

- **Ground-glass opacity:** A modest form of consolidation appearing as a hazy, uniform lung pattern on ultrasonography with little bronchial air trapping.

- **Snowflake sign:** A pattern showing substantial consolidation characterized by a heterogeneous, punctate echotexture with apparent bronchial air trapping.

- **Pulmonary points:** Defined locations where lung sliding occurs sporadically during respiration, identified by real-time ultrasonography.

- **Double lung points:** Distinct demarcation points between the upper and lower lung fields on LUS, indicating differences in the type or amount of illness.

- **Stratospheric sign/barcode sign:** When lung sliding is absent, parallel lines in M-mode ultrasound replace the granular echotexture typically seen under the pleural line, indicating pneumothorax.

- Beach sign/sandpaper sign: An echotexture that is uniformly granular and resembles a beach seen in M-mode ultrasonography, indicating normal lung sliding and ruling out pneumothorax.

- Pleural effusion: The accumulation of excess fluid in the pleural space.

3.6. Statistical Analysis

Data were analyzed using SPSS software, version 29.0. The χ^2 test or Fisher's exact test, where applicable, was used to evaluate intergroup differences in proportions for categorical variables, which are expressed as percentages (Tables 2 and 3). Continuous variables with a normal distribution are represented as mean \pm standard deviation (SD), and the paired *t*-test was used to assess differences across groups (Table 4). Statistical significance was defined as a P-value of less than 0.05.

4. Results

4.1. Overview of Research Participants

Out of 471 newborns, 1 was excluded due to HIV, 2 due to syphilis, and 2 had disputes with the hospital. Ultimately, 466 newborns were included in the study. Based on diagnostic categorization [TTN, NRDS, ARDS, MAS, PN, NPH, BPD, atelectasis, pneumothorax, and controls], Table 5 shows the baseline characteristics of the 466 newborns. Among the 466 study participants, Table 5 lists 97 cases in the normal control group, 88 cases of TTN, 69 cases of NRDS, 29 cases of ARDS, 57 cases of MAS, 89 cases of PN, 6 cases of NPH, 20 cases of BPD, 3 cases of neonatal atelectasis, and 8 cases of neonatal pneumothorax.

4.2. Incidence Rates and Ultrasound Imaging Features of Common Pulmonary Disorders in Neonates

Normal newborn lungs on ultrasound display lung sliding, equidistant and parallel arrangement of A-lines and pleural lines, and smooth, clear, and regular pleural and A-lines. Normal lung imaging shows a classic beach sign on M-mode ultrasound, with no pulmonary consolidation or alveolar interstitial syndrome.

In TTN, ultrasound imaging characteristics include pleural line abnormalities (100.00%), disappearance or reduction of A-lines (100.00%), beach sign (100.00%), B-lines (80.68%), AIS and/or dense B-lines and/or white lung (94.32%), bipulmonary foci (81.82%), pleural

effusion (19.32%), and lung islands (31.82%). There are no indications of pneumothorax or pulmonary consolidation.

For NRDS, ARDS, MAS, and PN, ultrasound features include lung consolidation, fragmentation, ground-glass sign, snowflake sign, and pulmonary pulsations (100.00%), along with the beach sign (100.00%). These are also characteristics of NPH and BPD, with common features including lung consolidation or hepatoid transformation. B-lines, AIS, dense B-lines, multiple lung points, aberrant pleural lines, disappearance or reduction of A-lines, and pleural effusion are all possible.

Neonatal atelectasis ultrasonography reveals pulmonary consolidation, but no pleural effusion or bilateral lung points are observed. Neonatal pneumothorax is characterized by abnormal or nonexistent lung sliding (100.00%), stratospheric sign (100.00%), and pulmonary spot (75.00%) on ultrasonography.

Refer to Figures 1-7 and Table 1 for detailed imaging features.

4.3. Comparison of Ultrasonographic Results Between Neonates with Transient Tachypnea of Newborn and Healthy Controls

A comparison of ultrasonographic results between 88 neonates with TTN and 97 healthy controls is shown in Table 2. No pulmonary consolidation was found when ultrasound images of neonates without pulmonary illness and those with TTN were compared. Significant differences were observed between TTN patients and neonates without pulmonary disease in terms of white lung, dense B-lines, AIS, B-lines, comet tail sign, bipulmonary spots, pleural effusion, pleural line, and A-line ($P < 0.05$) (Table 2). Both TTN patients and newborns without pulmonary illness may have pleural effusion and the B-line.

4.4. Comparison of Frequency of B-lines in Neonates with Transient Tachypnea of Newborn Stratified by Gestational Age

According to Table 3, there were statistically significant differences ($P < 0.05$) between the TTN group and the control group when comparing the frequency of B-lines in newborns at ≤ 32 weeks, ≤ 34 weeks, and ≤ 37 weeks of gestational age. However, when comparing the TTN group to the control group at 42 weeks, there was

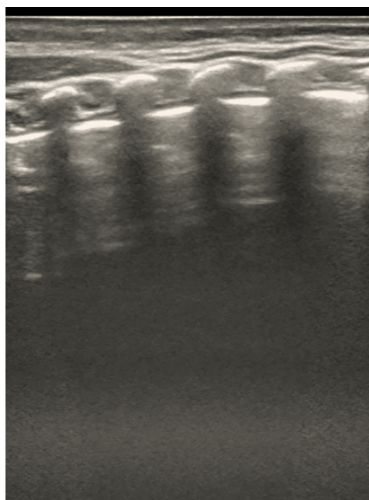


Figure 1. Representative ultrasound image of normal newborn lung. Normal lung aeration is indicated by the image's parallel, evenly spaced A-lines and smooth, clear pleural lines. A Mindray M9 portable color Doppler ultrasound machine (Shenzhen Mindray Biomedical Electronics Co., Ltd., China) was used to take the pictures.

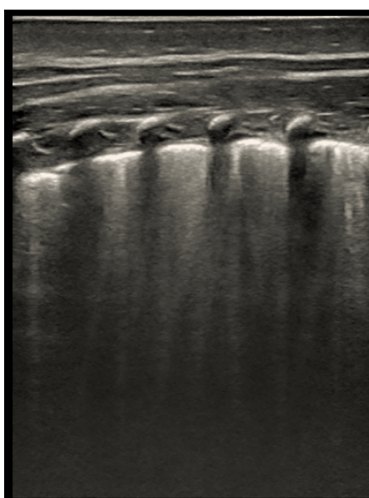


Figure 2. B-line artifacts in an ultrasound image. Multiple, merging B-lines, focal abnormalities of the pleural line, and no A-lines are visible in this picture. An increase in interstitial lung fluid is strongly suggested by this trend. A Mindray M9 portable color Doppler ultrasound machine (Shenzhen Mindray Biomedical Electronics Co., Ltd., China) was used to take the pictures.

no statistically significant difference ($P > 0.05$) in the emergence of B-lines.

Advice: B-lines are prevalent in neonates without pulmonary disease. TTN can occur in both full-term and premature infants, and the incidence of TTN steadily declines with increasing gestational age.

4.5. Duration of B-lines in Newborns with TTN Stratified by Gestational Age

Table 4 displays the duration of B-lines in newborns with TTN stratified by gestational age. All gestational age groups showed significant variations ($P < 0.05$).

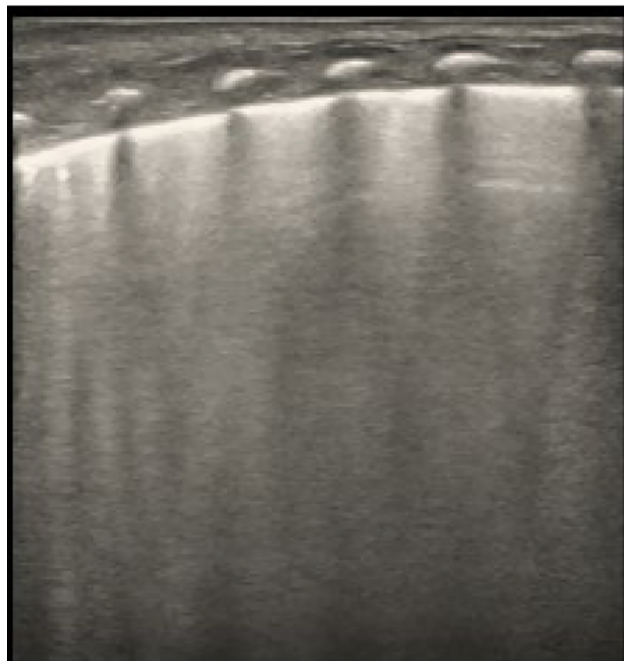


Figure 3. Alveolar-interstitial syndrome (AIS) is depicted in an ultrasound image. Findings consistent with AIS are seen in the scan, including localized thickening and blurring of the pleural line, total lack of A-lines, and lack of lung consolidation. A Mindray M9 portable color Doppler ultrasound machine (Shenzhen Mindray Biomedical Electronics Co., Ltd., China) was used to take the pictures.

When comparing the TTN group to the controls, the duration of B-lines was substantially longer [77.09 hours (95% CI, 73.42 - 80.76) to 221.75 hours (95% CI, 212.80 - 230.70) vs. 48.12 hours (95% CI, 45.80 - 50.44) to 143.23 hours (95% CI, 137.27 - 149.19), $P < 0.05$]. However, B-lines alone are not sufficient to diagnose TTN. TTN newborns, particularly those in the lower gestational age group, exhibited a substantially longer duration of B-lines compared to the control group, suggesting a longer duration of interstitial pulmonary fluid accumulation. This finding has clinical implications for forecasting the degree and duration of respiratory distress in TTN newborns and may inform clinical decision-making.

5. Discussion

Pneumothorax and atelectasis in neonates require prompt diagnosis and treatment, as do common lung conditions such as TTN, NRDS, ARDS, MAS, PN, NPH, and BPD (1, 3, 5-14). After examining the sonographic aspects of prevalent lung disorders, we found that some do not entirely match earlier studies, necessitating further research.

5.1. Discovery of Common Pulmonary Diseases in Newborns by Lung Ultrasound

Lung sliding and pleural lines are basic ultrasonographic characteristics essential for interpreting neonatal LUS images. Our results align with earlier research showing that pleural line anomalies, including obliteration, roughness, or irregularity, indicate underlying pathology (1-4). The acoustic impedance difference between the lung and pleura, pleural thickness, pleural cavity size, and the fluid and air content of the lung all affect pleural line thickness. Additionally, the appearance of the pleural line alone cannot be used as a sign of abnormalities because mechanical factors also play a role. Contrary to Liu's findings, the number of A-lines cannot be used to determine the presence or absence of pathology alone because it is sensitive to changes in ultrasound parameters like power, focus, depth, and gain and is directly correlated with the fluid and air content within the lung (2, 4). By enabling sound to pass through the lung tissue, LUS examination is useful in identifying



Figure 4. Ultrasound image indicative of neonatal respiratory distress syndrome (NRDS). Large-scale lung consolidation with noticeable air bronchograms, no A-lines, and either thicker or absent pleural lines are all present in this image, which is consistent with NRDS. The NRDS can be diagnosed by combining clinical case characteristics. A Mindray M9 portable color Doppler ultrasound machine (Shenzhen Mindray Biomedical Electronics Co., Ltd., China) was used to take the pictures.

pleural-lung disorders. However, pneumothorax or subcutaneous emphysema makes it difficult to see deep-seated lung conditions in those areas. In other words, not every underlying pathology is necessarily ruled out by a normal LUS appearance. Additional imaging modalities, such as chest X-rays or CT scans, are necessary for an appropriate diagnosis if clinical observations differ from LUS results.

5.2. Lung Ultrasound Examination for Fluid and Pulmonary Edema

Increased fluid content in the lung is indicated by B-lines, which are linked to factors such as image depth settings and the gas-liquid ratio inside the lung. According to earlier research, normal newborns may occasionally show a few B-lines, which typically disappear 1 - 7 days after birth (2, 4). Our research indicates that the duration of B-lines is related to treatment outcomes, postnatal illness, and gestational age. Although TTN can occur in term newborns, our research shows that it is more common in neonates with lower gestational ages. The amount of pulmonary fluid and its clearance capacity determine whether TTN

is present; children born at lower gestational ages usually have reduced clearance capacities and longer clearance times. Alveolar-interstitial syndrome, dense B-lines, "white lung" and prolonged persistence of B-line abnormalities on LUS are all signs of TTN's elevated pulmonary fluid content. Although these are characteristics of pulmonary edema, identical LUS observations can also be seen in conditions other than TTN. Additionally, early in the postnatal period, B-lines can be seen in non-pulmonary illnesses. Therefore, these data alone cannot be used to diagnose TTN. Contrary to some earlier findings, our research also showed that the presence of pulmonary point signals is not a special feature of TTN but can occur in illnesses such as respiratory distress syndrome, PN, and meconium aspiration syndrome (2, 4, 5, 15).

5.3. Consolidation and Atelectasis Diagnosis by Lung Ultrasound

We combine NRDS, ARDS, MAS, PN, NPH, and BPD for analysis since our results show that these conditions are characterized by consolidation on LUS. These results are consistent with earlier research (16-18). Similar



Figure 5. Acute respiratory distress syndrome (ARDS)-consistent ultrasound image. This picture shows signs of ARDS, including thickened or absent pleural lines, total lack of A-lines, and severe lung consolidation with conspicuous air bronchograms. The ARDS can be diagnosed by combining clinical case characteristics. A Mindray M9 portable color Doppler ultrasound machine (Shenzhen Mindray Biomedical Electronics Co., Ltd., China) was used to take the pictures.

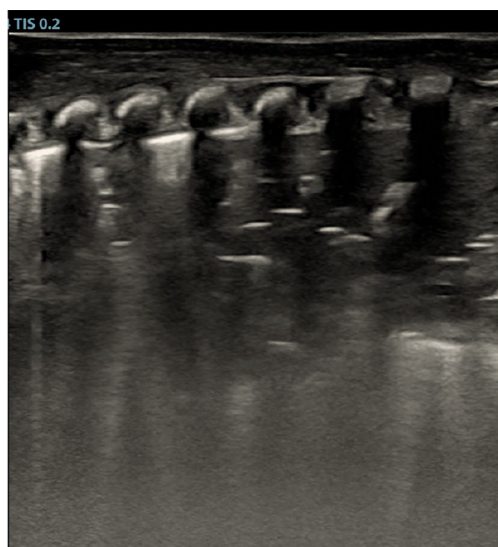


Figure 6. Ultrasound picture showing pneumonia of newborn (PN). The picture shows PN-like lung consolidation with noticeable air bronchograms, no A-lines, and either thickened or absent pleural lines. Pneumonia can be diagnosed by combining clinical case characteristics. A Mindray M9 portable color Doppler ultrasound machine (Shenzhen Mindray Biomedical Electronics Co., Ltd., China) was used to take the pictures.

ultrasonographic findings to consolidation are seen in neonatal atelectasis, but there are no pleural effusions

or pulmonary point symptoms, which differs from several earlier reports (2, 4, 6-13, 19-22). According to our



Figure 7. Ultrasound image suggestive of neonatal pulmonary hemorrhage (NPH). With fragmented tissue-like patterns, prominent air bronchograms, no A-lines, and either absent or thicker pleural lines — all of which are indicative of NPH — the image displays heterogeneous echogenicity. Pneumonia can be diagnosed by combining clinical case characteristics. A Mindray M9 portable color Doppler ultrasound machine (Shenzhen Mindray Biomedical Electronics Co., Ltd., China) was used to take the pictures.

experience, LUS by itself is not a good indicator of BPD. When oxygen reliance persists for more than 28 days and if LUS shows patchy consolidation and anomalies in the pleural line (apart from massive consolidation and other curable reasons), this method of diagnosing BPD might produce a more dependable and clinically sound result. Crucially, lung consolidation on LUS alone cannot be used to diagnose a particular lung disease; rather, it should result in a classification into a group of disorders, following which clinical presentation and other diagnostic information should be incorporated into the evaluation. The "patchy sign" indicates consolidation or hemorrhage in lung tissue, whereas the "snowflake sign" and "ground-glass opacity" are LUS findings that show lung consolidation and/or atelectasis. These results emphasize the importance of

understanding the clinical correlations of these symptoms when using a diagnostic strategy.

5.4. Lung Ultrasound for Diagnosing Pneumothorax

Our results on pneumothorax are consistent with those of other investigations (2, 4). In the studied location, lung sliding (sandpaper or coast sign in M-mode) aids in ruling out pneumothorax. On M-mode ultrasonography, the air in the pleural space causes acoustic shadowing, which impairs lung sliding and results in a layering or barcode sign that denotes pneumothorax. However, when pneumothorax is present, deep-seated lung illness may not be apparent. Although the absence of pulmonary point symptoms does not rule out the potential of pneumothorax in severe cases, they can be useful in defining the

boundaries of mild to moderate pneumothoraces. Assessment of pulmonary point signs, lung sliding, and B-lines using both B-mode and M-mode ultrasound should be part of a thorough evaluation when pneumothorax is suspected. To rule out pneumothorax, look for B-lines or lung sliding. Pleural effusion, pulmonary edema, consolidation, and pneumothorax can all be diagnosed with the benefits of LUS (2, 4, 23). By examining multiple infant lung conditions, this study circumvents the drawbacks of single-disease research. Drawbacks of LU include its incapacity to identify deep-seated lung disease in infants with pneumothorax and its incapacity to identify underlying pathology in the absence of anomalies at the pleural-lung interface. Additional investigation is required, including a correlation with the assessment of pulmonary edema by cardiac ultrasonography. In conclusion, screening and monitoring are made possible by the unique LUS patterns present in prevalent infant lung disorders. Lung ultrasound results must be carefully combined with the patient's clinical presentation and additional diagnostic information to make a diagnosis.

5.5. Innovation and Limitations of Research

This study is novel because it examined several prevalent lung conditions simultaneously to prevent inaccurate findings from focusing on only one. More objective ultrasonographic characteristics and alterations in prevalent infant lung diseases can be obtained using it. The diagnosis of pleural effusion, pulmonary edema, pulmonary consolidation, and pneumothorax is relatively straightforward with LUS, which is one of its numerous benefits (2, 4, 23). However, it should be acknowledged that the following are the limitations of LUS diagnosis: Lesions in the lung tissue may not be diagnosed when no lesions at the pleural-lung interface are found in LUS diagnostics. It is also impossible to diagnose lung abnormalities in the deep areas of a pneumothorax.

Acknowledgements

Thanks to Professor Liu Jing for his contribution to the promotion of lung ultrasound.

Footnotes

Authors' Contribution: Z. L. F.: Study concept and design; N. H.: Acquisition of data; Z. L. F.: Analysis and interpretation of data; Z. L. F.: Drafting of the manuscript; Z. L. F.: Critical revision of the manuscript for important intellectual content; Z. L. F.: Statistical analysis; Z. L. F.: Administrative, technical, and material support; Z. L. F.: Study supervision.

Conflict of Interests Statement: The authors declare no conflict of interest.

Data Availability: All relevant data are within the paper and its supporting information files.

Ethical Approval: The present study was approved by the Ethics Committee of Dehong Prefecture People's Hospital (Ref: 2019DY002).

Funding/Support: Science and Technology Plan Project of Yunnan Provincial Department of Science and Technology (No. 202201AY070001-220); Reserve Talents for Young and Middle aged Academic and Technical Leaders in Dehong Prefecture (Talent Revitalization Plan) (No. 2023RC001); National Natural Science Foundation project (No. 81960290R72); Dehong Prefecture People's Hospital (Dehong Hospital affiliated to Kunming Medical University) Scientific Research Fund Project (No. 2022DY008); Dehongzhou Science and Technology Plan Project (zc202411); Scientific Research Fund Project of Yunnan Provincial Department of Education (No. 2019J1316).

Informed Consent: Informed consent was obtained from all subjects involved in the study.

References

- Schwarz S. Pulmonary Sonography - Neonatal Diagnosis Part 1. *Ultraschall Med.* 2023;**44**(1):14-35. [PubMed ID: 36075237]. <https://doi.org/10.1055/a-1885-5664>.
- Shang L, Wang H, Lu Z, Wang Y, Fu W, Liu Y, et al. Protocol and Guidelines for Point-of-Care Lung Ultrasound in Diagnosing Neonatal Pulmonary Diseases Based on International Expert Consensus. *J Vis Exp.* 2019;(145). e58990. <https://doi.org/10.3791/58990>.
- Schwarz S. Pulmonary Sonography - Neonatal Diagnosis Part 2. *Ultraschall Med.* 2023;**44**(3):240-68. [PubMed ID: 36669528]. <https://doi.org/10.1055/a-1996-0767>.
- Kurepa D, Zaghloul N, Watkins L, Liu J. Neonatal lung ultrasound exam guidelines. *J Perinatol.* 2018;**38**(1):11-22. [PubMed ID: 29144490]. <https://doi.org/10.1038/jp.2017.140>.
- Alhassen Z, Vali P, Guglani L, Lakshminrusimha S, Ryan RM. Recent Advances in Pathophysiology and Management of Transient Tachypnea of Newborn. *J Perinatol.* 2021;**41**(1):6-16. [PubMed ID: 33811111].

- 32753712]. [PubMed Central ID: [PMCI1867197](#)]. <https://doi.org/10.1038/s41372-020-0757-3>.
6. Liu J. Ultrasound diagnosis and grading criteria of neonatal respiratory distress syndrome. *J Matern Fetal Neonatal Med*. 2023;**36**(1):2206943. [PubMed ID: [37142428](#)]. <https://doi.org/10.1080/14767058.2023.2206943>.
 7. Pandey RP, Mukherjee R, Chang C. COVID-19: Recent Advances in Lung Ultrasound. *Curr Respiratory Med Rev*. 2023;**19**(1):24-8. <https://doi.org/10.2174/1573398x18666220901141351>.
 8. Ware LB. Improving Acute Respiratory Distress Syndrome Diagnosis: Is Lung Ultrasound the Answer? *Am J Respir Crit Care Med*. 2023;**207**(12):1548-9. [PubMed ID: [36943197](#)]. [PubMed Central ID: [PMCI0273114](#)]. <https://doi.org/10.1164/rccm.202303-0406ED>.
 9. Perri A, Fattore S, Prontera G, Patti ML, Sbordone A, Tana M, et al. Lung Ultrasound in the Early Diagnosis and Management of the Mild Form of Meconium Aspiration Syndrome: A Case Report. *Diagnostics (Basel)*. 2023;**13**(4). [PubMed ID: [36832209](#)]. [PubMed Central ID: [PMC9955577](#)]. <https://doi.org/10.3390/diagnostics13040719>.
 10. Bancalari E, Jain D. Bronchopulmonary Dysplasia: 50 Years after the Original Description. *Neonatology*. 2019;**115**(4):384-91. [PubMed ID: [30974430](#)]. <https://doi.org/10.1159/000497422>.
 11. Gilfillan M, Bhandari A, Bhandari V. Diagnosis and management of bronchopulmonary dysplasia. *BMJ*. 2021;**375**:n1974. [PubMed ID: [34670756](#)]. <https://doi.org/10.1136/bmj.n1974>.
 12. Schmidt AR, Ramamoorthy C. Bronchopulmonary dysplasia. *Paediatr Anaesth*. 2022;**32**(2):174-80. <https://doi.org/10.1136/adc.55.9.661>.
 13. Abiramalatha T, Ramaswamy VV, Bandyopadhyay T, Somanath SH, Shaik NB, Pullattayil AK, et al. Interventions to Prevent Bronchopulmonary Dysplasia in Preterm Neonates: An Umbrella Review of Systematic Reviews and Meta-analyses. *JAMA Pediatr*. 2022;**176**(5):502-16. [PubMed ID: [35226067](#)]. <https://doi.org/10.1001/jamapediatrics.2021.6619>.
 14. Huang C, Zhang S, Ha X, Cui Y, Zhang H. The value of lung ultrasound score in neonatal respiratory distress syndrome: a prospective diagnostic cohort study. *Front Med (Lausanne)*. 2024;**11**:1357944. [PubMed ID: [38390571](#)]. [PubMed Central ID: [PMCI0881781](#)]. <https://doi.org/10.3389/fmed.2024.1357944>.
 15. Zong HF, Guo G, Liu J, Yang CZ, Bao LL. Wet lung leading to RDS: the lung ultrasound findings and possible mechanisms - a pilot study from an animal model. *J Matern Fetal Neonatal Med*. 2021;**34**(13):2197-205. [PubMed ID: [33203283](#)]. <https://doi.org/10.1080/14767058.2020.1846711>.
 16. Xin H, Wang L, Hao W, Hu H, Li H, Liu B. Lung Ultrasound in the Evaluation of Neonatal Respiratory Distress Syndrome. *J Ultrasound Med*. 2023;**42**(3):713-21. [PubMed ID: [36106717](#)]. <https://doi.org/10.1002/jum.16097>.
 17. Bao LY, Dao XY, Du K. Progress in the Application of Lung Ultrasound for the Evaluation of Neonates with Respiratory Distress Syndrome. *J Multidiscip Healthc*. 2024;**17**:1-9. [PubMed ID: [38192739](#)]. [PubMed Central ID: [PMCI0771789](#)]. <https://doi.org/10.2147/JMDH.S442464>.
 18. Zheng L, Jing H, Liu L, Wang L. Feasibility of ultrasound in the diagnosis of neonatal respiratory distress syndrome in preterm infants. *J Trop Pediatr*. 2023;**69**(2). [PubMed ID: [36744917](#)]. [PubMed Central ID: [PMC9901274](#)]. <https://doi.org/10.1093/tropej/fmad007>.
 19. Liu J, Fu W, Qin SJ. Lung ultrasound to guide the administration of exogenous pulmonary surfactant in respiratory distress syndrome of newborn infants: A retrospective investigation study. *Front Pediatr*. 2022;**10**:952315. [PubMed ID: [36340730](#)]. [PubMed Central ID: [PMC9635001](#)]. <https://doi.org/10.3389/fped.2022.952315>.
 20. Capasso L, Pacella D, Migliaro F, Salome S, Grasso F, Corsini I, et al. Can lung ultrasound score accurately predict surfactant replacement? A systematic review and meta-analysis of diagnostic test studies. *Pediatr Pulmonol*. 2023;**58**(5):1427-37. [PubMed ID: [36717970](#)]. <https://doi.org/10.1002/ppul.26337>.
 21. De Luca D, Alonso-Ojembarrena A, Elsayed Y, Raimondi F, Sanchez-Luna M. Lung ultrasound score is the forgotten, accurate, and physiologically sound method to guide surfactant administration. *J Pediatr*. 2023;**257**:113364. [PubMed ID: [36828345](#)]. <https://doi.org/10.1016/j.jpeds.2023.02.010>.
 22. You H, Huang X. Effect of pulmonary surfactant on the prevention of neonatal respiratory distress syndrome in premature infants. *Am J Transl Res*. 2021;**13**(4):3642-9. [PubMed ID: [34017546](#)]. [PubMed Central ID: [PMC8129273](#)].
 23. Bediwy AS, Al-Biltagi M, Ahmed Nazeer J, Saeed NK. Chest ultrasound in neonates: What neonatologists should know. *Artificial Intelligence Med Imaging*. 2022;**3**(1):8-20. <https://doi.org/10.35711/aimi.v3.i1.8>.